

# Capital Area Human Services District

Jan Laughinghouse, PhD, LCSW

Behavioral Health Collaborative Meeting

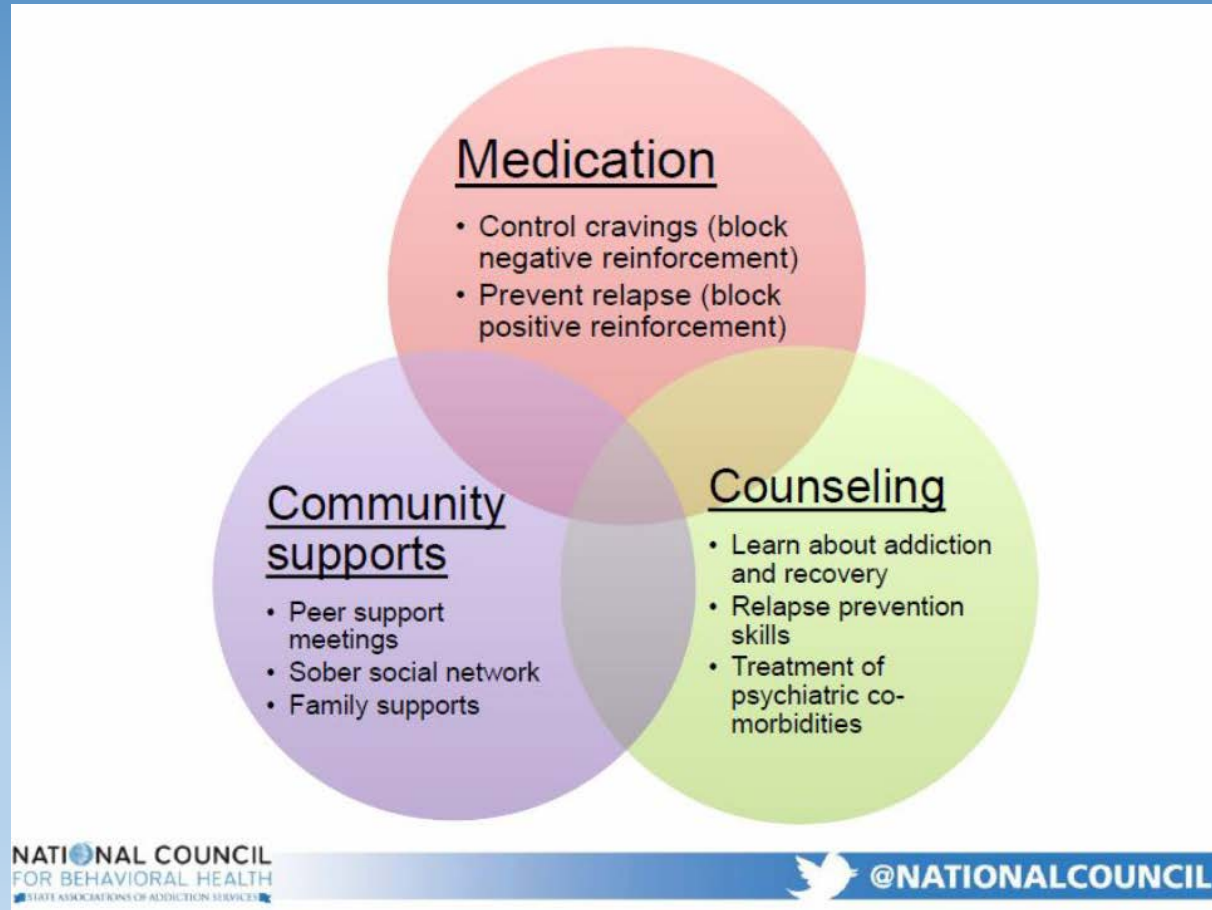
May 4, 2018

# Order of the Presentation

- Access to Vivitrol (CABH & CARP)
- Screening, Assessment, Referral & Treatment
- Narcan Distribution

## A. Access to Vivitrol

# Treatment of OUD



# Vivitrol<sup>®</sup>

Vivitrol is an extended release injectable given once a month for Alcohol and Opioid dependence.

## What are the Benefits of Vivitrol Treatment?

- Vivitrol is non-addictive
- It does not create a "high"
- Easier than daily oral medications
- Successful for both alcohol and opioids
- Effective for relapse prevention

# CAHSD MAT Workgroup

- Executive Director
- Medical Director
- Director of Business Operations
- MH Clinical Services Director
- Staff Psychiatrist
- RN Supervisor
- Program Director for ARS
- Program Manager for ARS
- Consultants: Dr. Arwen Podesta and Gwendolyn Lastrapes

# Workgroup Output

- Treatment model
  - Groups, individual therapy, peer support, MD visits, medication
- Screening
- Tx practices and protocols
- Physician protocols
- Consents
- Pregnancy Acknowledgement
- Clinic Procedure

# Preparation

- Education & Training
  - MAT (Information and Stigma reduction)
  - Vivitrol (Alkermes)
    - Clinicians
    - Nurses



# NOW ACCEPTING REFERRALS!

## Center for Adult Behavioral Health

Scott Thomas, ARS Program Manager

225.362.5329 or [Scott.Thomas@la.gov](mailto:Scott.Thomas@la.gov)

## Capital Area Recovery Program (CARP)

Dr. Joseph Pete, CARP Facility Manager

225.922.3177 or [Joseph.Pete@la.gov](mailto:Joseph.Pete@la.gov)

## B. Screening, Assessment, Referral & Treatment

# Screening, Assessment, Referral & Treatment

## **Pre-MAT Implementation**

- All clients screened for problem substance use
- Assessed with Addiction Severity Index
- Referred to appropriate level of care (internal or external)
- Abstinence-based treatment services

## **Post-MAT Implementation**

- All clients screened for problem substance use and interest in Vivitrol (if using opioids)
- Assessed with Addiction Severity Index
- Referred to appropriate level of care (internal or external) and peer support (STR)
- Abstinence-based treatment services and MAT (Vivitrol)

## C. Narcan Distribution

# NARCAN

Source: narcan.com



## WHAT IS

## NARCAN® NASAL SPRAY

NARCAN® (naloxone HCl) Nasal Spray is the first and only FDA-approved nasal form of naloxone for the emergency treatment of a [known or suspected opioid overdose](#).

NARCAN® Nasal Spray counteracts the life-threatening effects of opioid overdose. Since most accidental overdoses occur in a home setting, it was developed for first responders, as well as family, friends, and caregivers.

# NARCAN (cont'd)

- Provided, by OBH, through STR funds
- CAHSD submitted a Narcan needs assessment
  - Surveyed treatment providers and community organizations
  - Determined target population and rationale
  - Developed dissemination and tracking plan
  - Received 1445 kits
- Over 500 kits disseminated
  - Working to create a model for access in EDs and for Community Paramedics who f/u after overdoses
  - Peers coordinating outreach to community organizations and CAHSD clients
  - Planning NARCAN training (coming soon: Date/time TBD)

# Need Narcan for your organization? Contact CAHSD's STR Peer Support Specialists

Tonja Myles

[Tonja.Myles@la.gov](mailto:Tonja.Myles@la.gov)

Ivan Toldson

[Ivan.Toldson@la.gov](mailto:Ivan.Toldson@la.gov)

# Questions?

Jan Laughinghouse

[Janzlean.Laughinghouse@la.gov](mailto:Janzlean.Laughinghouse@la.gov)